

# LUCI Global User Guide

---

Pre-Release, September 2015



# LUCI Global

## INTRODUCTION

### A Unique Backhaul Network

LUCI Global represents a different approach to providing LUCI products and is not yet fully addressed on our website, due to its pre-release nature. LUCI Global is a subscription service provided to broadcast entities and other live-content recipient organizations, as opposed to the purchase of a license. Payment is priced on monthly service and prepaid annually.

LUCI Global is intended for enterprises, station groups, and networks that require studio quality live reports and audio contributions from anywhere in the world at any time. Any remote co-host, reporter, or influential guest can go “live” on radio, in studio quality, by simply using an iPhone or other device, with an Internet connection. The superior audio quality makes it sound as if all participants are together in the radio studio. LUCI Global is a major advance in making remote audio “backhaul” user-friendly.

Client organizations register in the LUCI Global directory. LUCI Global permits individual remote contributors to provide live reports to their affiliated stations, as well as to a community of other LUCI Global clients by addressing target recipient stations through the LUCI Global directory.

### Beta Test Phase

Since this app is still in the test phase we have not yet determined the monthly subscription fee. With annual subscription prepayment, station setup charges will be waived. Sample stations have been included in the Directory during the initial test phase, and more will be added as we proceed toward product release. If you would like to be included during this Beta test phase, contact [sales@technicadelarte.com](mailto:sales@technicadelarte.com). Subscription fees will apply.

Current directories defined in the testing phase are:

- Miscellaneous
- NL
- Newspapers
- Support

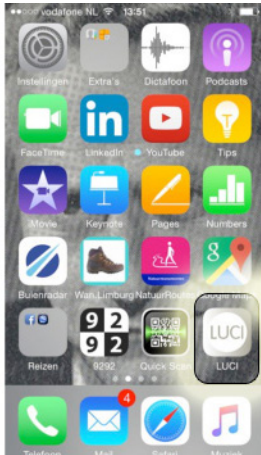
In the future we plan to expand and standardize the directories as follows (where B2= Broadcast To)

- Support (Backbone, LUCI Echo Server, Glensound)
- B2 Newspapers
- B2 Podcasts
- B2 Worship
- B2 Universities/Colleges
- B2 Attorneys
- B2 Magazines
- B2 National
- B2 Federal
- B2 Other

Other initiatives planned

- Arrange by Country/Category
- Add the stations logos to the directory
- Add all other platforms / OS

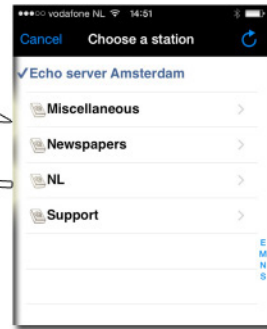
# Very Simple and Easy to Use



1. Download LUCI Global—the fifth (5th) button down on the right side of the iOS home screen.



2. Open the LUCI Global mobile app. Click the window to select your station.



3. Find and select your preferred affiliate station. You may find it under business type, geographical or other future categories.

4. Finally, push the 'ON AIR' button to immediately go Live.



# How Does LUCI Global Work?

LUCI Global is a worldwide service with a downloadable mobile app for authorized individuals to contribute live audio feeds to their affiliated radio station. Currently, the app of choice is available for iOS in the iTunes App Store, and soon from the participating stations' websites or other URLs. LUCI Global is in the process of testing for other platforms, including Android, MAC OS, Windows and Linux, and will release those versions as they become available.

The broadcaster (or receiving party) controls the primary process by subscribing to the directory, choosing the category, and paying a monthly fee. The broadcaster controls access to the station from contributors. Our company, Technica Del Arte—the developer of all LUCI software—assists the broadcaster in adding his station(s) to the directory (list) and selecting the proper configuration options, such as quality level, codec type and return channel to the contributor. With these configuration options pre-selected, the configuration process for the contributor is automatic.

The process for using the LUCI Global contributor app is simple. Start by downloading the free LUCI Global app from the App Store or other source. The LUCI Global mobile app gives you an interface similar to the LUCI LIVE Lite app, only easier to use. With LUCI Global, all configurations are predetermined for the app user, including connection set up, bit rate and codec. Details follow.

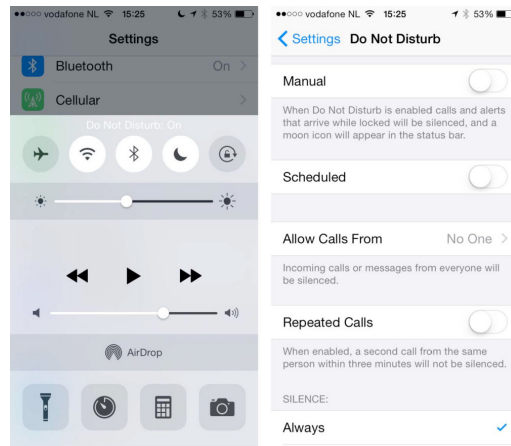


# Get started with the LUCI Global Mobile App

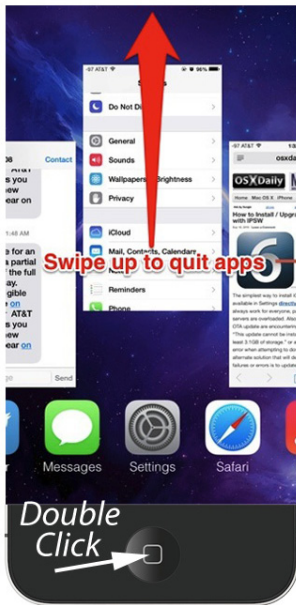
## CHECKLIST BEFORE STREAMING LIVE FROM A MOBILE DEVICE

### 1 SETTINGS > DO NOT DISTURB + turn off other apps

Avoid interruptions of your remote broadcast from incoming phone calls. Turn on the 'Do Not Disturb' functionality on your iOS device. Also, turn off all other apps that may interrupt or use excessive device resources. Check this by double clicking the iPhone or iPad Home button, which opens the iOS Multitasking Screen. Swipe "up" to close unnecessary apps. Then touch the LUCI Global app image on the Multitasking Screen to return.



*Different iOS screens display how to turn on Do Not Disturb*



*Double Click the Home Button and swipe up to close apps*



## 2. CHECK YOUR CONNECTIVITY

### a. Examine Your Environment

The single most important variable in online live reporting is the quality and reliability of your network. While it is important to verify your network, the quality can quickly change without notice, so it's smart to have a contingency or backup plan.

Ask yourself these questions:

1 Am I in a surrounding with few people or in a busy area with large crowds? For instance, the 4G network may be excellent prior to the sports event, but will probably be very congested when the arena fills.

2 What alternative networks are at my disposal? Wi-fi, Ethernet on CAT-5, 3G, 4G or WiMax?

3 What time is it? At rush hour you can expect more network issues than at 03:00 in the morning.

When you are in a busy area with many people, your best results will be with 4G. Under those conditions, 3G will likely be totally unusable. Wi-fi should only be used in places where there are few people and you are on a “known” network, such as your home.

If conditions force you to use 3G, make sure you avoid crowded, busy areas. Also, a fast network speed does not say anything about the stability of the connection for streaming. Having maximum “bars” of connectivity does not necessarily mean you have a stable connection.



## 2. CHECK YOUR CONNECTIVITY

### b. Test the Network—and Your Signal

First, download from the App Store the program called *OpenSignal* to test your connection for VOIP calls. We suggest you do a SpeedTest 3 times. If you get 5 stars all 3 times, your network should be suitable for a VOIP call, and for a LUCI Global connection.

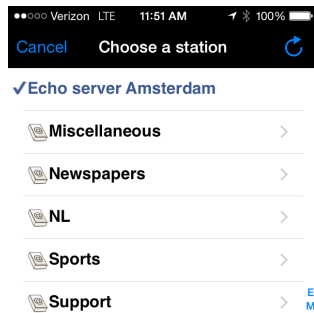


To **SelfTest**, connect to the *LUCI Echo Server* from your station-list in LUCI Global. Press the On Air button to connect (button illuminates RED when you are connected live), then speak. You should hear an echo of yourself back. If you hear little to no dropouts for a minute the connection should be suitable to go live on the air. Disconnect by pressing the On Air button again (button goes white, not illuminated).



### 3. NOW CONNECT

When you have determined that the network is functioning normally, choose your station in the LUCI Global station list, then press **On Air** when you want to connect live.

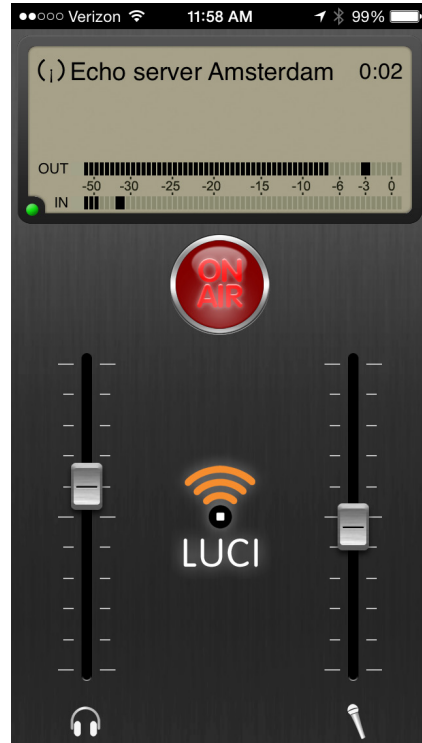


From this point on, concentrate only on your work! The **quality of your report** is now your most important concern. Don't worry about the connection—your connection cannot be changed during a live report.

---

---

You are now contributing to radio broadcasts using a unique mobile backhaul system, one unlike any other in the world. Enjoy your experience and use it to your advantage.





# LUCI Global Technology Partner

## Backbone Networks Corporation

**backbone**

### Cloud-Based Radio Production and Broadcasting Stations

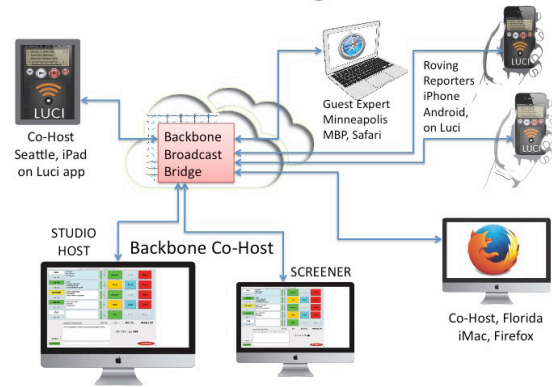
*Backbone Networks and Technica Del Arte BV, the creators of Luci® Live, have teamed up to bring you the world's most advanced remote broadcast technology, one that delivers studio-quality live feeds from all of your remote co-hosts, guests and field reporters, who require nothing more than an iOS or Android smartphone or tablet.*

**BACKBONE CO-HOST** is the cloud-based radio backhaul service developed specifically for professional **Sports/News/Talk** stations, by the makers of **Backbone Radio™** and **Backbone Talk™**.

### Backbone Co-Host™

Backbone Co-Host cloud-based radio broadcast service—integrates LUCI Global into a professional radio broadcast conference bridge, allowing remote co-hosts, guests and field reporters to participate in a live, interactive broadcast from all parts of the world. The result is a program that allows a variety of contributors to provide studio-quality audio feeds, most using LUCI Global with the Opus advanced audio codec, in a program alongside studio hosts and listeners who call-in on phones.

### Distributed Broadcasting—In the Cloud



- Produce your radio shows with distributed hosts & guests
- No phone lines, extra equipment, or capital expense
- Connect via Phones, Tablets, PC or Mac®—Studio Quality
- Integrated with Luci® Global—includes your mobile apps
- Unlimited remote users—equip all your reporters
- Conference hosts, guests and reporters together, at will
- Unlimited usage—24/7—One flat rate

Backbone Networks creates professional cloud-based radio stations and networks. With their focus on live sports/news/talk stations, Backbone's broadcast-from-anywhere technology enables professional broadcasters to increase production values, yet streamline event-based radio production. They take care of the technical part of broadcasting — making it easy to operate 24/7 live and automated, to produce live from everywhere, to stream to a worldwide audience, and to syndicate to AM/FM/Satellite stations.

---

# LUCI Global

## User Guide

Pre-Release, September 2015



LUCI